

Phospho-PTPN11 (Y542) Antibody



PACO00292

Product Information

Size:

50ug

Reactivity:

Human, Mouse, Rat

Source:

Rabbit

Isotype:

IgG

Applications:

ELISA, WB, IHC

Recommended dilutions:

WB:1:500-1:2000, IHC:1:100-1:300

Protein Background:**Gene ID:**

PTPN11

Uniprot

Q06124

Synonyms:

PTPN11; PTP2C; SHPTP2; Tyrosine-protein phosphatase non-receptor type 11; Protein-tyrosine phosphatase 1D; PTP-1D; Protein-tyrosine phosphatase 2C; PTP-2C; SH-PTP2; SHP-2; Shp2; SH-PTP3

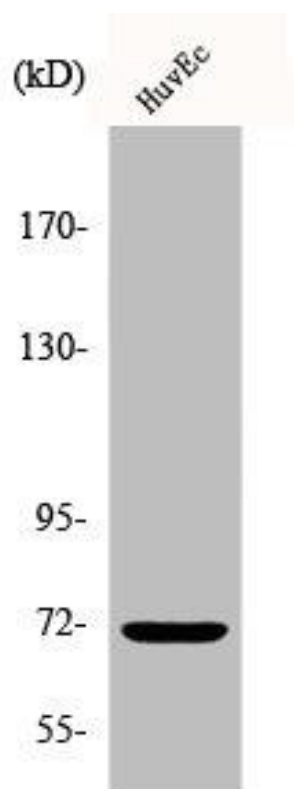
Immunogen:

Synthesized peptide derived from human SH-PTP2 around the phosphorylation site of Y542.

Storage:

Liquid in PBS containing 50% glycerol, 0.5% BSA and 0.02% sodium azide.

Product Images



Western Blot analysis of HuvEc cells using Phospho-SH-PTP2 (Y542) Polyclonal Antibody.