

# Phospho-SYT1/SYT2 (S309/306) Antibody



PACO00294

---

## Product Information

**Size:**

50ug

**Reactivity:**

Human, Mouse, Rat

**Source:**

Rabbit

**Isotype:**

IgG

**Applications:**

ELISA, WB, IHC

**Recommended dilutions:**

WB:1:500-1:2000, IHC:1:100-1:300

**Protein Background:****Gene ID:**

SYT1/SYT2

**Uniprot**

P21579/Q8N9I0

**Synonyms:**

SYT1; SVP65; SYT; Synaptotagmin-1; Synaptotagmin I; SytI; p65; SYT2; Synaptotagmin-2; Synaptotagmin II; SytII

**Immunogen:**

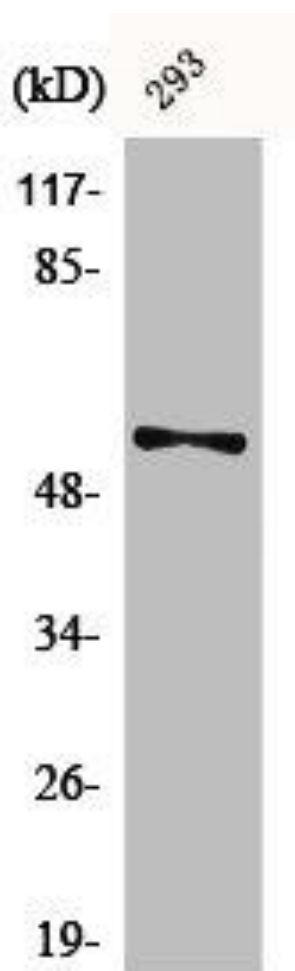
Synthesized peptide derived from human Synaptotagmin 1/2 around the phosphorylation site of S309/306.

**Storage:**

Liquid in PBS containing 50% glycerol, 0.5% BSA and 0.02% sodium azide.

## Product Images

---



Western Blot analysis of 293 cells using Phospho-Synaptotagmin 1/2 (S309/306) Polyclonal Antibody.