

Phospho-SYT1/SYT2 (T202/199) Antibody



PACO00295

Product Information

Size:

50ug

Reactivity:

Human, Mouse, Rat

Source:

Rabbit

Isotype:

IgG

Applications:

ELISA, WB, IHC

Recommended dilutions:

WB:1:500-1:2000, IHC:1:100-1:300

Protein Background:**Gene ID:**

SYT1/SYT2

Uniprot

P21579/Q8N9I0

Synonyms:

SYT1; SVP65; SYT; Synaptotagmin-1; Synaptotagmin I; SytI; p65; SYT2; Synaptotagmin-2; Synaptotagmin II; SytII

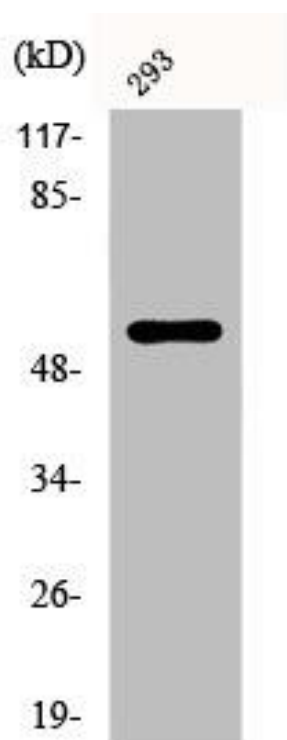
Immunogen:

Synthesized peptide derived from human Synaptotagmin 1/2 around the phosphorylation site of T202/199.

Storage:

Liquid in PBS containing 50% glycerol, 0.5% BSA and 0.02% sodium azide.

Product Images



Western Blot analysis of 293 cells using Phospho-Synaptotagmin 1/2 (T202/199) Polyclonal Antibody.