

Phospho-CDK2 (T160) Antibody



PACO00298

Product Information

Size:

50ug

Reactivity:

Human, Mouse, Rat

Source:

Rabbit

Isotype:

IgG

Applications:

ELISA, WB, IHC

Recommended dilutions:

WB:1:500-1:2000, IHC:1:100-1:300

Protein Background:**Gene ID:**

CDK2

Uniprot

P24941

Synonyms:

CDK2; CDKN2; Cyclin-dependent kinase 2; Cell division protein kinase 2; p33 protein kinase

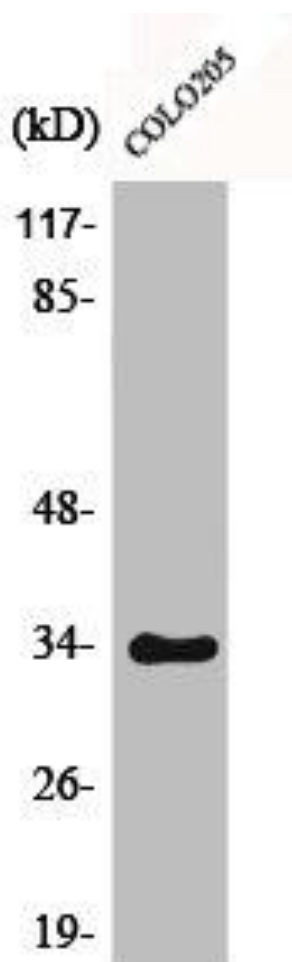
Immunogen:

Synthesized peptide derived from human Cdk2/Cdc2 around the phosphorylation site of T160.

Storage:

Liquid in PBS containing 50% glycerol, 0.5% BSA and 0.02% sodium azide.

Product Images



Western Blot analysis of COLO205 cells using Phospho-Cdk2/Cdc2 (T160) Polyclonal Antibody.