

# Phospho-ACACA (S80) Antibody



PACO00300

---

## Product Information

**Size:**

50ug

**Reactivity:**

Human, Mouse, Rat

**Source:**

Rabbit

**Isotype:**

IgG

**Applications:**

ELISA, WB, IHC

**Recommended dilutions:**

WB:1:500-1:2000, IHC:1:100-1:300

**Protein Background:****Gene ID:**

ACACA

**Uniprot**

Q13085

**Synonyms:**

ACACA; ACAC; ACC1; ACCA; Acetyl-CoA carboxylase 1; ACC1; ACC-alpha

**Immunogen:**

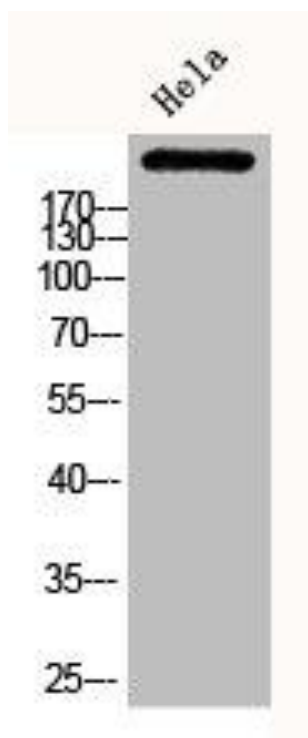
Synthesized peptide derived from human ACCalpha around the phosphorylation site of S80.

**Storage:**

Liquid in PBS containing 50% glycerol, 0.5% BSA and 0.02% sodium azide.

## Product Images

---



Western Blot analysis of HELA cells using Phospho-ACCalpha (S80) Polyclonal Antibody.