

Phospho-EEF2K (S366) Antibody



PACO00302

Product Information

Size:

50ug

Reactivity:

Human, Rat

Source:

Rabbit

Isotype:

IgG

Applications:

ELISA, WB, IHC

Recommended dilutions:

WB:1:500-1:2000, IHC:1:100-1:300

Protein Background:**Gene ID:**

EEF2K

Uniprot

O00418

Synonyms:

EEF2K; Eukaryotic elongation factor 2 kinase; eEF-2 kinase; eEF-2K; Calcium/calmodulin-dependent eukaryotic elongation factor 2 kinase

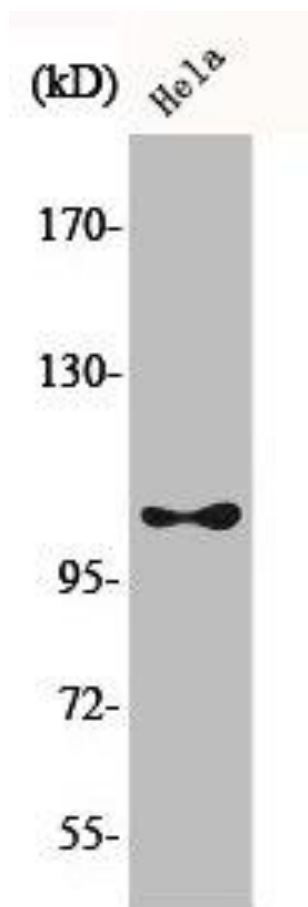
Immunogen:

Synthesized peptide derived from human eEF2K around the phosphorylation site of S366.

Storage:

Liquid in PBS containing 50% glycerol, 0.5% BSA and 0.02% sodium azide.

Product Images



Western Blot analysis of HeLa cells using Phospho-eEF2K (S366) Polyclonal Antibody.