

# Phospho-KSR1 (S392) Antibody



PACO00305

---

## Product Information

**Size:**

50ug

**Reactivity:**

Human, Mouse

**Source:**

Rabbit

**Isotype:**

IgG

**Applications:**

ELISA, WB, IHC

**Recommended dilutions:**

WB:1:500-1:2000, IHC:1:100-1:300

**Protein Background:****Gene ID:**

KSR1

**Uniprot**

Q8IVT5

**Synonyms:**

KSR1; KSR; Kinase suppressor of Ras 1

**Immunogen:**

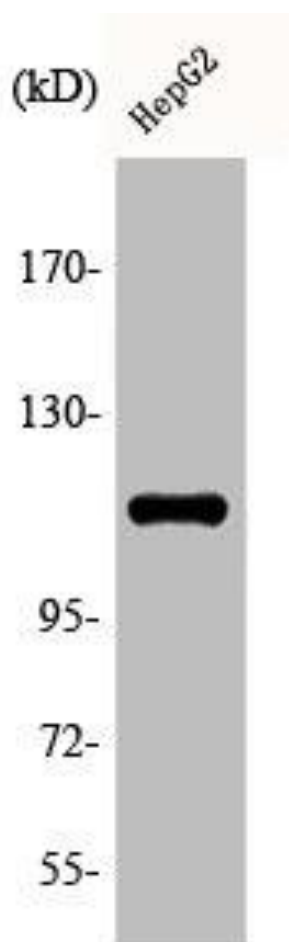
Synthesized peptide derived from human Ksr-1 around the phosphorylation site of S392.

**Storage:**

Liquid in PBS containing 50% glycerol, 0.5% BSA and 0.02% sodium azide.

## Product Images

---



Western Blot analysis of HepG2 cells using Phospho-Ksr-1 (S392) Polyclonal Antibody.