

Phospho-PLCG2 (Y753) Antibody



PACO00308

Product Information

Size:

50ug

Reactivity:

Human, Mouse, Rat

Source:

Rabbit

Isotype:

IgG

Applications:

ELISA, WB, IHC

Recommended dilutions:

WB:1:500-1:2000, IHC:1:100-1:300

Protein Background:**Gene ID:**

PLCG2

Uniprot

P16885

Synonyms:

PLCG2; 1-phosphatidylinositol 4; 5-bisphosphate phosphodiesterase gamma-2; Phosphoinositide phospholipase C-gamma-2; Phospholipase C-IV; PLC-IV; Phospholipase C-gamma-2; PLC-gamma-2

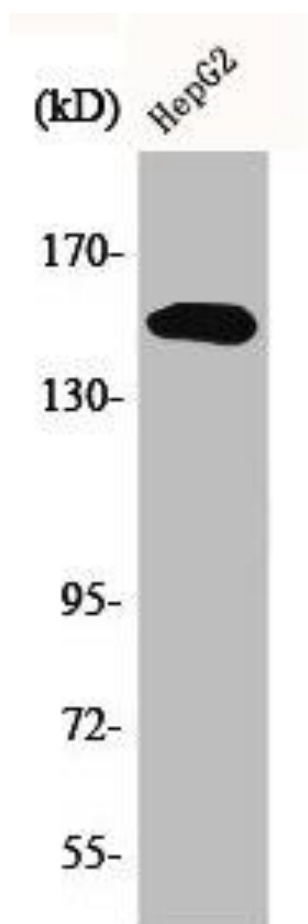
Immunogen:

Synthesized peptide derived from human PLC gamma2 around the phosphorylation site of Y753.

Storage:

Liquid in PBS containing 50% glycerol, 0.5% BSA and 0.02% sodium azide.

Product Images



Western Blot analysis of HepG2 cells using Phospho-PLC gamma2 (Y753) Polyclonal Antibody.