

Phospho-STAT2 (Y690) Antibody



PACO00309

Product Information

Size:

50ug

Reactivity:

Human, Rat

Source:

Rabbit

Isotype:

IgG

Applications:

ELISA, WB, IHC

Recommended dilutions:

WB:1:500-1:2000, IHC:1:100-1:300

Protein Background:

Gene ID:

STAT2

Uniprot

P52630

Synonyms:

STAT2; Signal transducer and activator of transcription 2; p113

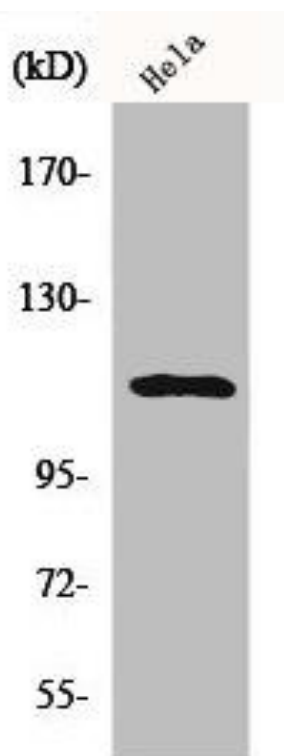
Immunogen:

Synthesized peptide derived from human Stat2 around the phosphorylation site of Y690.

Storage:

Liquid in PBS containing 50% glycerol, 0.5% BSA and 0.02% sodium azide.

Product Images



Western Blot analysis of HeLa cells using Phospho-Stat2 (Y690) Polyclonal Antibody.