

Phospho-FLT1 (Y1333) Antibody



PACO00313

Product Information

Size:

50ug

Reactivity:

Human, Mouse, Rat

Source:

Rabbit

Isotype:

IgG

Applications:

ELISA, WB, IHC

Recommended dilutions:

WB:1:500-1:2000, IHC:1:100-1:300

Protein Background:**Gene ID:**

FLT1

Uniprot

P17948

Synonyms:

FLT1; FLT; FRT; VEGFR1; Vascular endothelial growth factor receptor 1; VEGFR-1; Fms-like tyrosine kinase 1; FLT-1; Tyrosine-protein kinase FRT; Tyrosine-protein kinase receptor FLT; FLT; Vascular permeability factor receptor

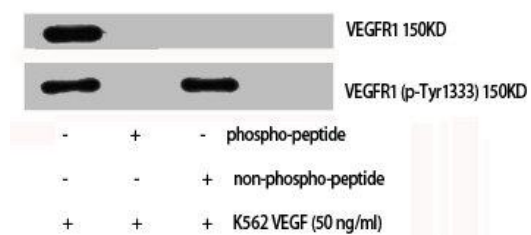
Immunogen:

Synthesized peptide derived from human Flt-1 around the phosphorylation site of Y1333.

Storage:

Liquid in PBS containing 50% glycerol, 0.5% BSA and 0.02% sodium azide.

Product Images



Western Blot analysis of K562+VEGF cells using Phospho-Flt-1 (Y1333) Polyclonal Antibody.