

Phospho-MEF2A (S408) Antibody



PACO00319

Product Information

Size:

50ug

Reactivity:

Human, Mouse, Rat

Source:

Rabbit

Isotype:

IgG

Applications:

ELISA, WB, IHC, IF

Recommended dilutions:

WB:1:500-1:2000, IHC:1:100-1:300,
IF:1:200-1:1000

Protein Background:**Gene ID:**

MEF2A

Uniprot

Q02078

Synonyms:

MEF2A; MEF2; Myocyte-specific enhancer factor 2A; Serum response factor-like protein 1

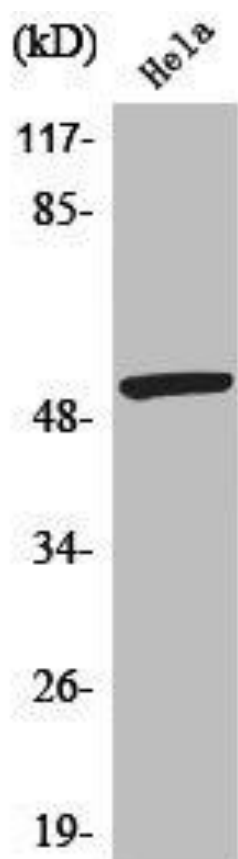
Immunogen:

Synthesized peptide derived from human MEF-2 around the phosphorylation site of S408.

Storage:

Liquid in PBS containing 50% glycerol, 0.5% BSA and 0.02% sodium azide.

Product Images



Western Blot analysis of HeLa cells using Phospho-MEF-2 (S408) Polyclonal Antibody.