

# Phospho-NFKB1 (S927) Antibody



PACO00320

---

## Product Information

**Size:**

50ug

**Reactivity:**

Human, Mouse

**Source:**

Rabbit

**Isotype:**

IgG

**Applications:**

ELISA, WB, IHC, IF

**Recommended dilutions:**

WB:1:500-1:2000, IHC:1:100-1:300,  
IF:1:200-1:1000

**Protein Background:****Gene ID:**

NFKB1

**Uniprot**

P19838

**Synonyms:**

NFKB1; Nuclear factor NF-kappa-B p105 subunit; DNA-binding factor KBF1; EBP-1;  
Nuclear factor of kappa light polypeptide gene enhancer in B-cells 1

**Immunogen:**

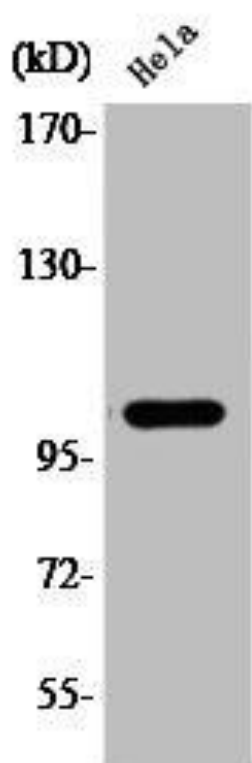
Synthesized peptide derived from human NFKappaB-p105 around the phosphorylation site of S927.

**Storage:**

Liquid in PBS containing 50% glycerol, 0.5% BSA and 0.02% sodium azide.

## Product Images

---



Western Blot analysis of HeLa cells using Phospho-NFKappaB-p105 (S927) Polyclonal Antibody.