

# Phospho-IGF1R/INSR (Y1161) Antibody



PACO00322

---

## Product Information

**Size:**

50ug

**Reactivity:**

Human, Mouse, Rat

**Source:**

Rabbit

**Isotype:**

IgG

**Applications:**

ELISA, WB, IHC, IF

**Recommended dilutions:**

WB:1:500-1:2000, IHC:1:100-1:300,  
IF:1:200-1:1000

**Protein Background:****Gene ID:**

IGF1R/INSR

**Uniprot**

P08069/P06213

**Synonyms:**

IGF1R; Insulin-like growth factor 1 receptor; Insulin-like growth factor I receptor; IGF-I receptor; CD antigen CD221; INSR; Insulin receptor; IR; CD antigen CD220

**Immunogen:**

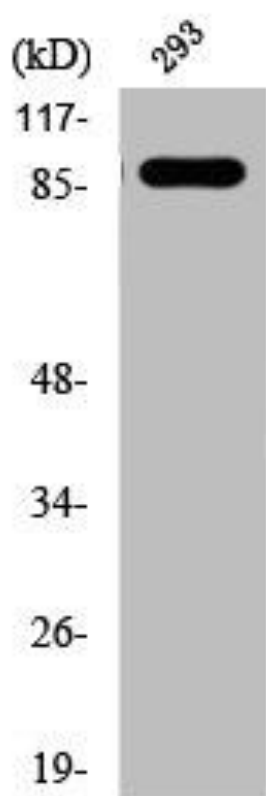
Synthesized peptide derived from human IGF-IR around the phosphorylation site of Y1161.

**Storage:**

Liquid in PBS containing 50% glycerol, 0.5% BSA and 0.02% sodium azide.

## Product Images

---



Western Blot analysis of 293 cells using Phospho-IGF-IR (Y1161) Polyclonal Antibody.