

Phospho-ESPL1 (S801) Antibody



PACO00325

Product Information

Size:

50ug

Reactivity:

Human, Mouse

Source:

Rabbit

Isotype:

IgG

Applications:

ELISA, WB, IHC, IF

Recommended dilutions:

WB:1:500-1:2000, IHC:1:100-1:300,
IF:1:200-1:1000

Protein Background:**Gene ID:**

ESPL1

Uniprot

Q14674

Synonyms:

ESPL1; ESP1; KIAA0165; Separin; Caspase-like protein ESPL1; Extra spindle poles-like 1 protein; Separase

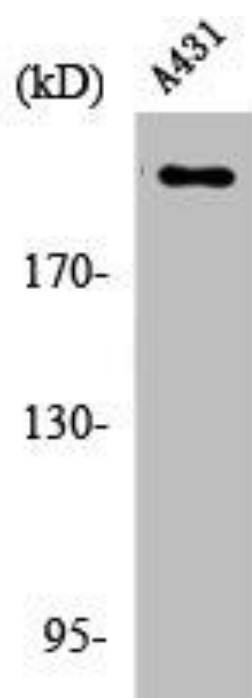
Immunogen:

Synthesized peptide derived from human Separase around the phosphorylation site of S801.

Storage:

Liquid in PBS containing 50% glycerol, 0.5% BSA and 0.02% sodium azide.

Product Images



Western Blot analysis of A431 cells using Phospho-Separase (S801) Polyclonal Antibody.