

Phospho-CALM1 (T80/S82) Antibody



PACO00326

Product Information

Size:

50ug

Reactivity:

Human, Mouse, Rat

Source:

Rabbit

Isotype:

IgG

Applications:

ELISA, WB, IHC, IF

Recommended dilutions:

WB:1:500-1:2000, IHC:1:100-1:300,
IF:1:200-1:1000

Protein Background:**Gene ID:**

CALM1

Uniprot

P62158

Synonyms:

CALM1; CALM; CAM; CAM1; CALM2; CAM2; CAMB; CALM3; CALML2; CAM3; CAMC;
CAMIII; Calmodulin; CaM

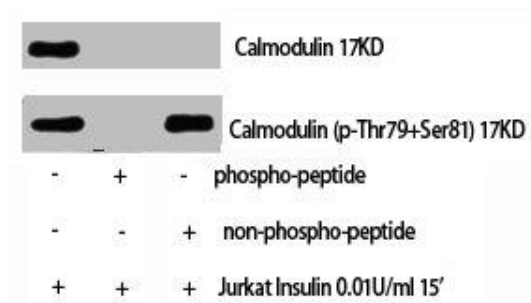
Immunogen:

Synthesized peptide derived from human Calmodulin around the phosphorylation site of T80/S82.

Storage:

Liquid in PBS containing 50% glycerol, 0.5% BSA and 0.02% sodium azide.

Product Images



Western Blot analysis of Jurkat+Insulin cells using Phospho-Calmodulin (T80/S82) Polyclonal Antibody.