

Phospho-ANXA1 (Y21) Antibody



PACO00335

Product Information

Size:

50ug

Reactivity:

Human

Source:

Rabbit

Isotype:

IgG

Applications:

ELISA, WB

Recommended dilutions:

WB:1:500-1:2000

Protein Background:**Gene ID:**

ANXA1

Uniprot

P04083

Synonyms:

ANXA1; ANX1; LPC1; Annexin A1; Annexin I; Annexin-1; Calpactin II; Calpactin-2; Chromobindin-9; Lipocortin I; Phospholipase A2 inhibitory protein; p35

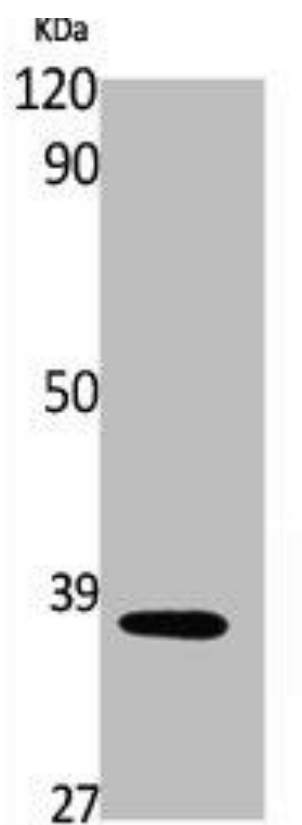
Immunogen:

Synthesized peptide derived from human Annexin I around the phosphorylation site of Y21.

Storage:

Liquid in PBS containing 50% glycerol, 0.5% BSA and 0.02% sodium azide.

Product Images



Western Blot analysis of NIH-3T3, cells using Phospho-Annexin I (Y21) Polyclonal Antibody.