

Phospho-RAD17 (S646) Antibody



PACO00337

Product Information

Size:

50ug

Reactivity:

Human, Mouse, Rat

Source:

Rabbit

Isotype:

IgG

Applications:

ELISA, WB

Recommended dilutions:

WB:1:500-1:2000

Protein Background:**Gene ID:**

RAD17

Uniprot

O75943

Synonyms:

RAD17; R24L; Cell cycle checkpoint protein RAD17; hRad17; RF-C/activator 1 homolog

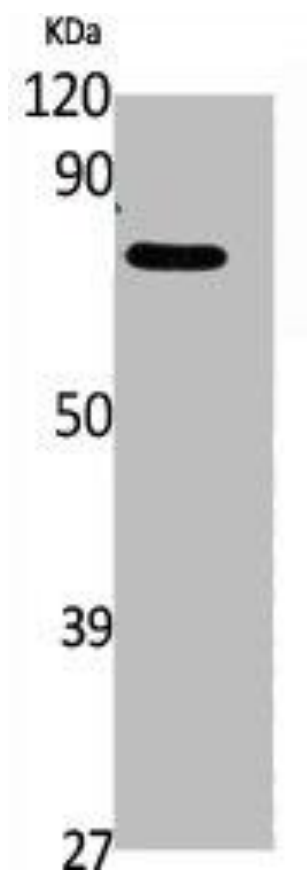
Immunogen:

Synthesized peptide derived from human Rad17 around the phosphorylation site of S646.

Storage:

Liquid in PBS containing 50% glycerol, 0.5% BSA and 0.02% sodium azide.

Product Images



Western Blot analysis of K562, cells using Phospho-Rad17 (S646) Polyclonal Antibody.