

Phospho-CTNNB1 (S552) Antibody



PACO00338

Product Information

Size:

50ug

Reactivity:

Human, Mouse, Rat

Source:

Rabbit

Isotype:

IgG

Applications:

ELISA, WB

Recommended dilutions:

WB:1:500-1:2000

Protein Background:**Gene ID:**

CTNNB1

Uniprot

P35222

Synonyms:

CTNNB1; CTNNB; OK/SW-cl.35; Catenin beta-1; Beta-catenin

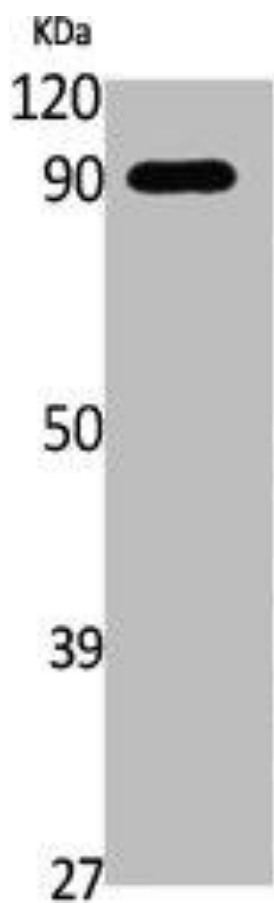
Immunogen:

Synthesized peptide derived from human Catenin-Beta around the phosphorylation site of S552.

Storage:

Liquid in PBS containing 50% glycerol, 0.5% BSA and 0.02% sodium azide.

Product Images



Western Blot analysis of NIH-3T3, cells using Phospho-Catenin-Beta (S552) Polyclonal Antibody.