

Phospho-EPOR (Y426) Antibody



PACO00339

Product Information

Size:

50ug

Reactivity:

Human, Mouse, Rat

Source:

Rabbit

Isotype:

IgG

Applications:

ELISA, WB

Recommended dilutions:

WB:1:500-1:2000

Protein Background:**Gene ID:**

EPOR

Uniprot

P19235

Synonyms:

EPOR; Erythropoietin receptor; EPO-R

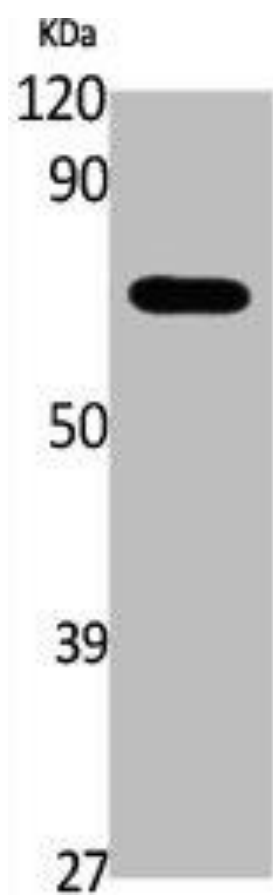
Immunogen:

Synthesized peptide derived from human EpoR around the phosphorylation site of Y426.

Storage:

Liquid in PBS containing 50% glycerol, 0.5% BSA and 0.02% sodium azide.

Product Images



Western Blot analysis of K562, cells using Phospho-EpoR (Y426) Polyclonal Antibody.