

AAK1 Antibody



PACO00349

Product Information

Size:

50ug

Reactivity:

Human, Mouse, Rat, Monkey

Source:

Rabbit

Isotype:

IgG

Applications:

ELISA, WB, IHC, IF

Recommended dilutions:

WB:1:500-1:2000, IHC:1:100-1:300,
IF:1:200-1:1000

Protein Background:

Gene ID:

AAK1

Uniprot

Q2M2I8

Synonyms:

AAK1; KIAA1048; AP2-associated protein kinase 1; Adaptor-associated kinase 1

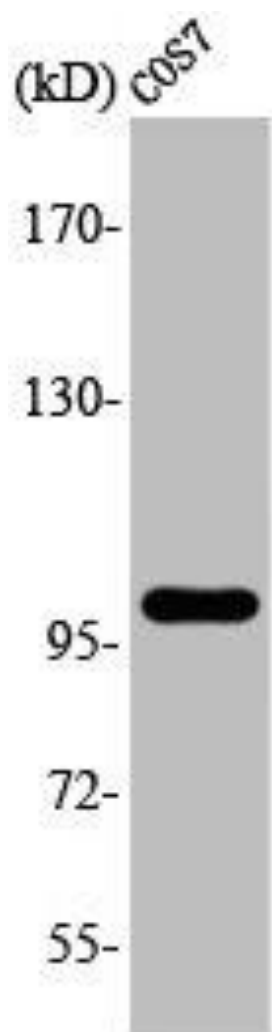
Immunogen:

Synthesized peptide derived from the Internal region of human AAK1.

Storage:

Liquid in PBS containing 50% glycerol, 0.5% BSA and 0.02% sodium azide.

Product Images



Western Blot analysis of COS7 cells using AAK1 Polyclonal Antibody.