

ADAM32 Antibody



PACO00368

Product Information

Size:

50ug

Reactivity:

Human

Source:

Rabbit

Isotype:

IgG

Applications:

ELISA, WB

Recommended dilutions:

WB:1:500-1:2000

Protein Background:

Gene ID:

ADAM32

Uniprot

Q8TC27

Synonyms:

ADAM32; Disintegrin and metalloproteinase domain-containing protein 32; ADAM 32

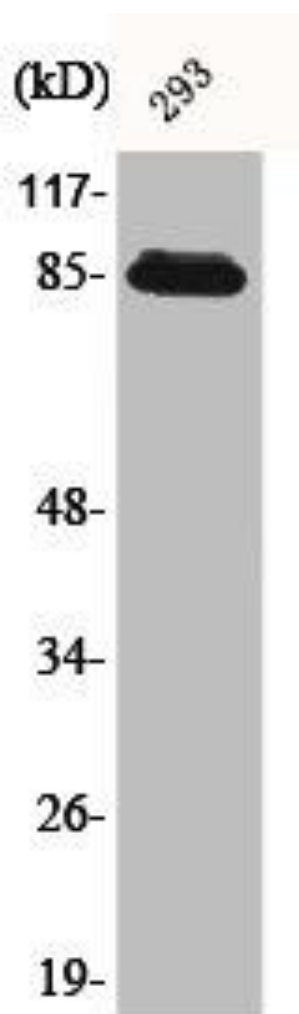
Immunogen:

Synthesized peptide derived from the Internal region of human ADAM32.

Storage:

Liquid in PBS containing 50% glycerol, 0.5% BSA and 0.02% sodium azide.

Product Images



Western Blot analysis of 293 cells using ADAM32 Polyclonal Antibody.