

ALX3 Antibody



PACO00390

Product Information

Size:

50ug

Reactivity:

Human, Mouse, Rat

Source:

Rabbit

Isotype:

IgG

Applications:

ELISA, WB, IHC, IF

Recommended dilutions:

WB:1:500-1:2000, IHC:1:100-1:300,
IF:1:200-1:1000

Protein Background:

Gene ID:

ALX3

Uniprot

O95076

Synonyms:

ALX3; Homeobox protein aristaless-like 3; Proline-rich transcription factor ALX3

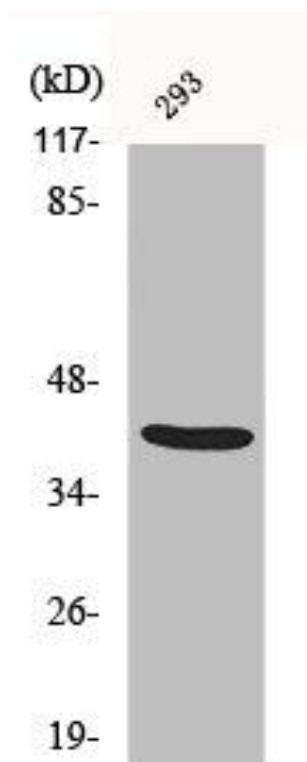
Immunogen:

Synthesized peptide derived from the Internal region of human ALX3.

Storage:

Liquid in PBS containing 50% glycerol, 0.5% BSA and 0.02% sodium azide.

Product Images



Western Blot analysis of 293 cells using ALX3 Polyclonal Antibody.