

# AQP12A/AQP12B Antibody



PACO00412

---

## Product Information

**Size:**

50ug

**Reactivity:**

Human

**Source:**

Rabbit

**Isotype:**

IgG

**Applications:**

ELISA, WB

**Recommended dilutions:**

WB:1:500-1:2000

**Protein Background:**

**Gene ID:**

AQP12A/AQP12B

**Uniprot**

Q8IXF9/A6NM10

**Synonyms:**

AQP12A; AQP12; AQPX2; Aquaporin-12A; AQP-12; AQP12B; Aquaporin-12B; AQP-12B

**Immunogen:**

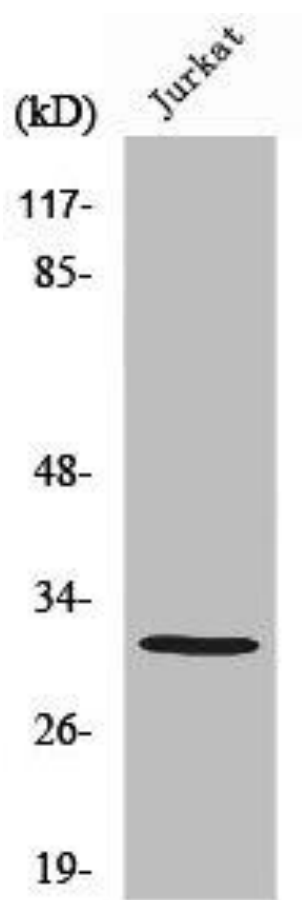
Synthesized peptide derived from the C-terminal region of human AQP12.

**Storage:**

Liquid in PBS containing 50% glycerol, 0.5% BSA and 0.02% sodium azide.

## Product Images

---



Western Blot analysis of Jurkat cells using AQP12 Polyclonal Antibody.