

ATXN1 Antibody



PACO00435

Product Information

Size:

50ug

Reactivity:

Human, Mouse

Source:

Rabbit

Isotype:

IgG

Applications:

ELISA, WB, IHC, IF

Recommended dilutions:

IHC:1:100-1:300, IF:1:200-1:1000

Protein Background:**Gene ID:**

ATXN1

Uniprot

P54253

Synonyms:

ATXN1; ATX1; SCA1; Ataxin-1; Spinocerebellar ataxia type 1 protein

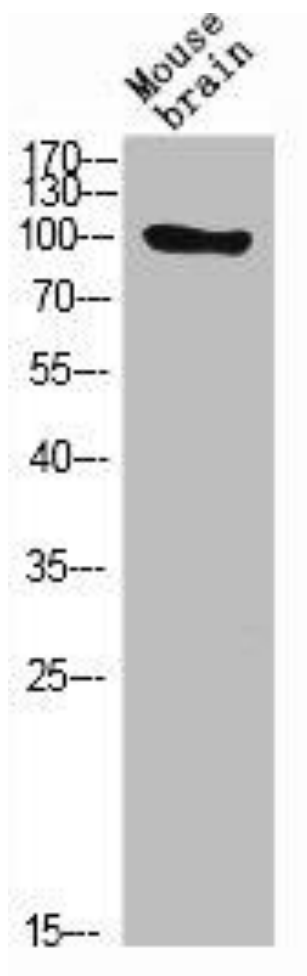
Immunogen:

Synthesized peptide derived from human Ataxin-1 around the non-phosphorylation site of S776.

Storage:

Liquid in PBS containing 50% glycerol, 0.5% BSA and 0.02% sodium azide.

Product Images



Western Blot analysis of MOUSE-BRAIN cells using Ataxin-1 Polyclonal Antibody.