

BST1 Antibody



PACO00479

Product Information

Size:

50ug

Reactivity:

Human, Mouse, Rat, Monkey

Source:

Rabbit

Isotype:

IgG

Applications:

ELISA, WB

Recommended dilutions:

WB:1:500-1:2000

Protein Background:**Gene ID:**

BST1

Uniprot

Q10588

Synonyms:

BST1; ADP-ribosyl cyclase 2; Bone marrow stromal antigen 1; BST-1; Cyclic ADP-ribose hydrolase 2; cADPr hydrolase 2; CD antigen CD157

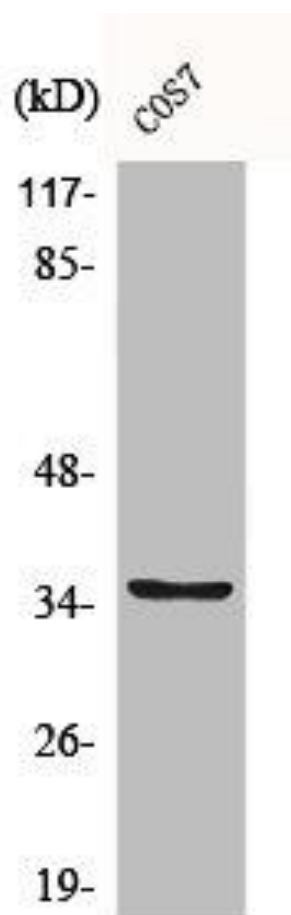
Immunogen:

Synthesized peptide derived from the Internal region of human BST-1.

Storage:

Liquid in PBS containing 50% glycerol, 0.5% BSA and 0.02% sodium azide.

Product Images



Western Blot analysis of Jurkat cells using BST-1 Polyclonal Antibody.