

CDH7 Antibody



PACO00499

Product Information

Size:

50ug

Reactivity:

Human, Mouse, Rat

Source:

Rabbit

Isotype:

IgG

Applications:

ELISA, WB, IHC, IF

Recommended dilutions:

WB:1:500-1:2000, IHC:1:100-1:300,
IF:1:200-1:1000

Protein Background:**Gene ID:**

CDH7

Uniprot

Q9ULB5

Synonyms:

CDH7; CDH7L1; Cadherin-7

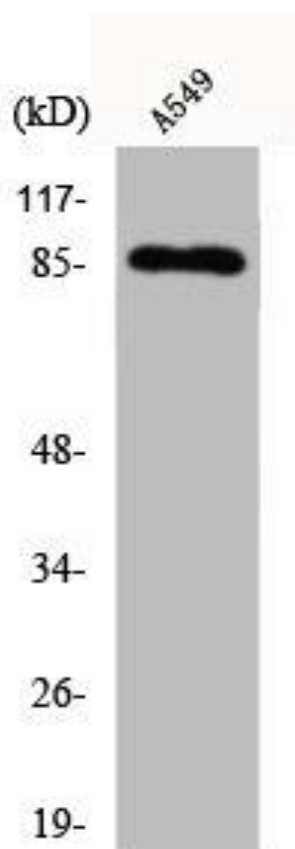
Immunogen:

Synthesized peptide derived from the C-terminal region of human Cadherin-7.

Storage:

Liquid in PBS containing 50% glycerol, 0.5% BSA and 0.02% sodium azide.

Product Images



Western Blot analysis of A549 cells using Cadherin-7 Polyclonal Antibody.