

# CSNK2A1 Antibody



PACO00515

---

## Product Information

**Size:**

50ug

**Reactivity:**

Human, Mouse, Rat

**Source:**

Rabbit

**Isotype:**

IgG

**Applications:**

ELISA, WB, IHC

**Recommended dilutions:**

WB:1:500-1:2000, IHC:1:100-1:300

**Protein Background:**

**Gene ID:**

CSNK2A1

**Uniprot**

P68400

**Synonyms:**

CSNK2A1; CK2A1; Casein kinase II subunit alpha; CK II alpha

**Immunogen:**

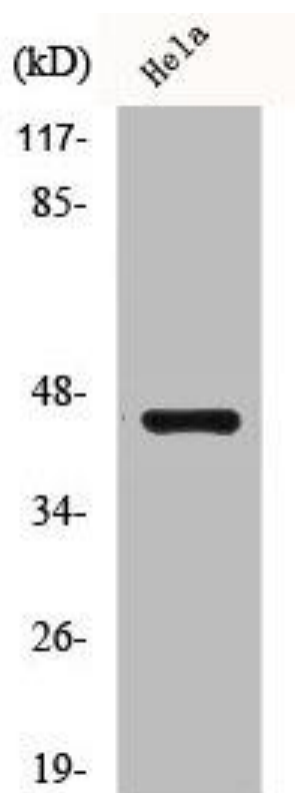
Synthesized peptide derived from human Casein Kinase IIalpha around the non-phosphorylation site of Y255.

**Storage:**

Liquid in PBS containing 50% glycerol, 0.5% BSA and 0.02% sodium azide.

## Product Images

---



Western Blot analysis of Jurkat cells using Casein Kinase IIalpha Polyclonal Antibody.