

# CNR2 Antibody



PACO00531

---

## Product Information

**Size:**

50ug

**Reactivity:**

Human

**Source:**

Rabbit

**Isotype:**

IgG

**Applications:**

ELISA, WB, IF

**Recommended dilutions:**

WB:1:500-1:2000, IF:1:200-1:1000

**Protein Background:**

**Gene ID:**

CNR2

**Uniprot**

P34972

**Synonyms:**

CNR2; Cannabinoid receptor 2; CB-2; CB2; hCB2; CX5

**Immunogen:**

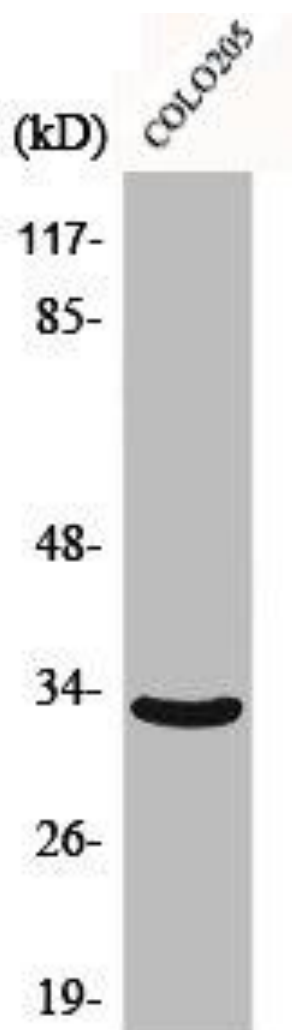
Synthesized peptide derived from the Internal region of human CB2.

**Storage:**

Liquid in PBS containing 50% glycerol, 0.5% BSA and 0.02% sodium azide.

## Product Images

---



Western Blot analysis of COLO205 cells using CB2 Polyclonal Antibody.