

# CD1E Antibody



PACO00552

---

## Product Information

**Size:**

50ug

**Reactivity:**

Human

**Source:**

Rabbit

**Isotype:**

IgG

**Applications:**

ELISA, WB

**Recommended dilutions:**

WB:1:500-1:2000

**Protein Background:****Gene ID:**

CD1E

**Uniprot**

P15812

**Synonyms:**

CD1E; T-cell surface glycoprotein CD1e; membrane-associated; hCD1e; R2G1; CD antigen CD1e

**Immunogen:**

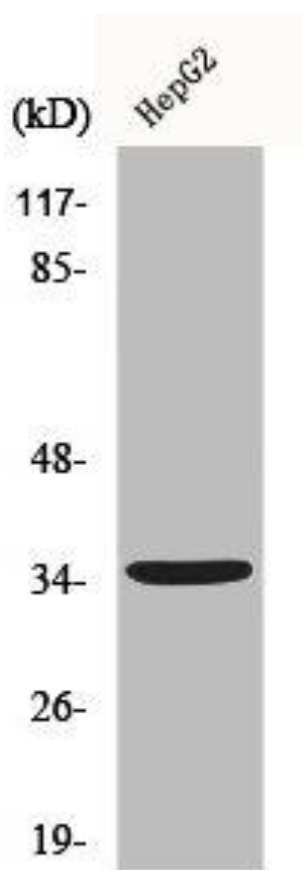
Synthesized peptide derived from the Internal region of human CD1e.

**Storage:**

Liquid in PBS containing 50% glycerol, 0.5% BSA and 0.02% sodium azide.

## Product Images

---



Western Blot analysis of HuvEc cells using CD1e Polyclonal Antibody.