

# CD2BP2 Antibody



PACO00555

---

## Product Information

**Size:**

50ug

**Reactivity:**

Human, Monkey

**Source:**

Rabbit

**Isotype:**

IgG

**Applications:**

ELISA, WB, IHC

**Recommended dilutions:**

WB:1:500-1:2000, IHC:1:100-1:300

**Protein Background:****Gene ID:**

CD2BP2

**Uniprot**

O95400

**Synonyms:**

CD2BP2; KIAA1178; CD2 antigen cytoplasmic tail-binding protein 2; CD2 cytoplasmic domain-binding protein 2; CD2 tail-binding protein 2

**Immunogen:**

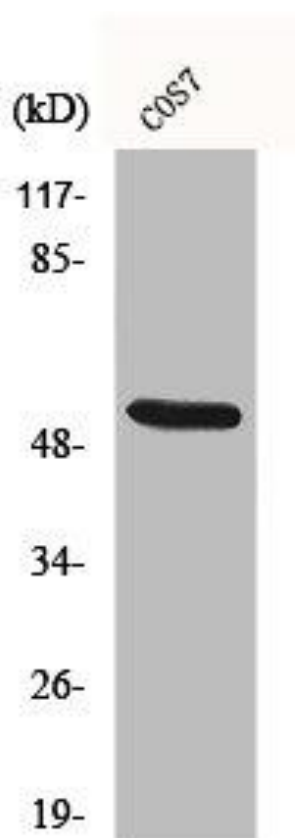
Synthesized peptide derived from the Internal region of human CD2BP2.

**Storage:**

Liquid in PBS containing 50% glycerol, 0.5% BSA and 0.02% sodium azide.

## Product Images

---



Western Blot analysis of COS7 cells using CD2BP2 Polyclonal Antibody.