

CDC25C Antibody



PACO00567

Product Information

Size:

50ug

Reactivity:

Human

Source:

Rabbit

Isotype:

IgG

Applications:

ELISA, WB, IHC

Recommended dilutions:

WB:1:500-1:2000, IHC:1:100-1:300

Protein Background:**Gene ID:**

CDC25C

Uniprot

P30307

Synonyms:

CDC25C; M-phase inducer phosphatase 3; Dual specificity phosphatase Cdc25C

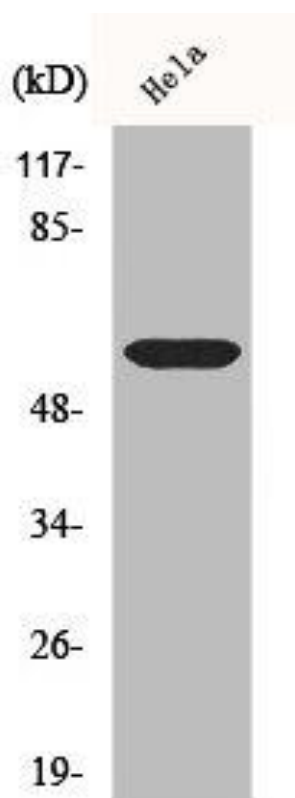
Immunogen:

Synthesized peptide derived from human Cdc25C around the non-phosphorylation site of S216.

Storage:

Liquid in PBS containing 50% glycerol, 0.5% BSA and 0.02% sodium azide.

Product Images



Western Blot analysis of Jurkat cells using Cdc25C Polyclonal Antibody.