

CDC42EP5 Antibody



PACO00570

Product Information

Size:

50ug

Reactivity:

Human, Mouse

Source:

Rabbit

Isotype:

IgG

Applications:

ELISA, WB, IHC

Recommended dilutions:

WB:1:500-1:2000, IHC:1:100-1:300

Protein Background:**Gene ID:**

CDC42EP5

Uniprot

Q6NZY7

Synonyms:

CDC42EP5; BORG3; CEP5; Cdc42 effector protein 5; Binder of Rho GTPases 3

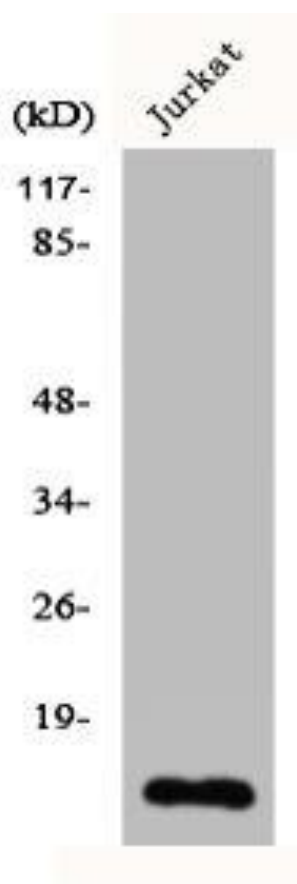
Immunogen:

Synthesized peptide derived from the N-terminal region of human Cdc42EP5.

Storage:

Liquid in PBS containing 50% glycerol, 0.5% BSA and 0.02% sodium azide.

Product Images



Western Blot analysis of Jurkat cells using Cdc42EP5 Polyclonal Antibody.