

CDKL4 Antibody



PACO00580

Product Information

Size:

50ug

Reactivity:

Human

Source:

Rabbit

Isotype:

IgG

Applications:

ELISA, WB, IHC, IF

Recommended dilutions:

WB:1:500-1:2000, IHC:1:100-1:300,
IF:1:200-1:1000

Protein Background:**Gene ID:**

CDKL4

Uniprot

Q5MAI5

Synonyms:

CDKL4; Cyclin-dependent kinase-like 4

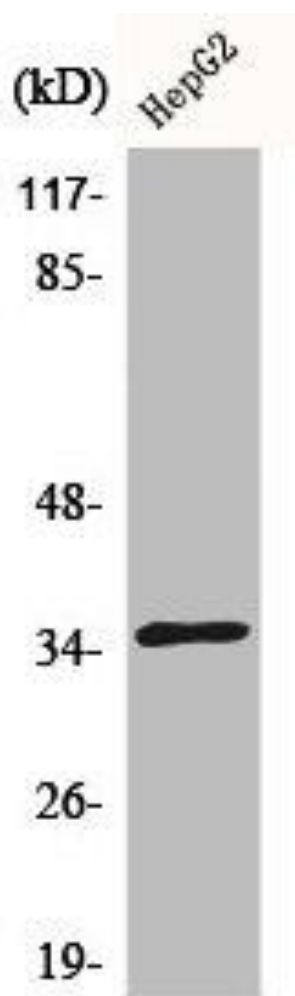
Immunogen:

Synthesized peptide derived from the C-terminal region of human CdkL4.

Storage:

Liquid in PBS containing 50% glycerol, 0.5% BSA and 0.02% sodium azide.

Product Images



Western Blot analysis of COLO205 cells using CdkL4 Polyclonal Antibody.