

CEP78 Antibody



PACO00585

Product Information

Size:

50ug

Reactivity:

Human, Mouse

Source:

Rabbit

Isotype:

IgG

Applications:

ELISA, WB, IHC

Recommended dilutions:

WB:1:500-1:2000, IHC:1:100-1:300

Protein Background:**Gene ID:**

CEP78

Uniprot

Q5JTW2

Synonyms:

CEP78; C9orf81; Centrosomal protein of 78 kDa; Cep78

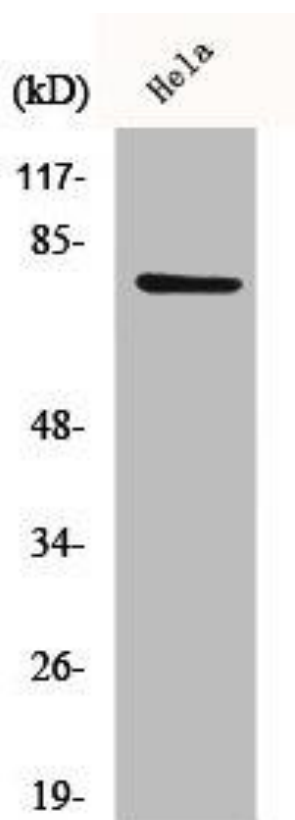
Immunogen:

Synthesized peptide derived from the Internal region of human CEP78.

Storage:

Liquid in PBS containing 50% glycerol, 0.5% BSA and 0.02% sodium azide.

Product Images



Western Blot analysis of HeLa cells using CEP78 Polyclonal Antibody.