

CBLN1 Antibody



PACO00586

Product Information

Size:

50ug

Reactivity:

Human, Mouse, Rat

Source:

Rabbit

Isotype:

IgG

Applications:

ELISA, WB

Recommended dilutions:

WB:1:500-1:2000

Protein Background:

Gene ID:

CBLN1

Uniprot

P23435

Synonyms:

CBLN1; Cerebellin-1; Precerebellin

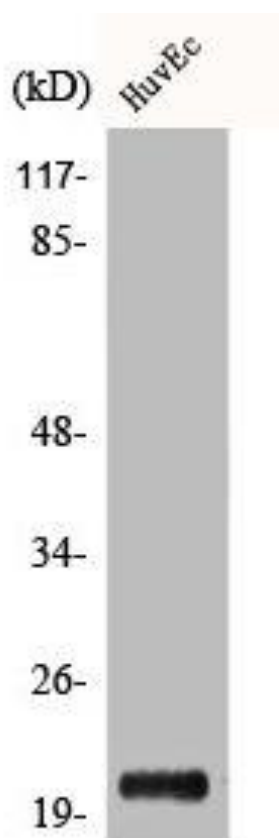
Immunogen:

Synthesized peptide derived from the C-terminal region of human Cerebellin 1.

Storage:

Liquid in PBS containing 50% glycerol, 0.5% BSA and 0.02% sodium azide.

Product Images



Western Blot analysis of HuvEc cells using Cerebellin 1 Polyclonal Antibody.