

CBLN2 Antibody



PACO00587

Product Information

Size:

50ug

Reactivity:

Human, Mouse, Rat, Monkey

Source:

Rabbit

Isotype:

IgG

Applications:

ELISA, WB

Recommended dilutions:

WB:1:500-1:2000

Protein Background:

Gene ID:

CBLN2

Uniprot

Q8IUUK8

Synonyms:

CBLN2; Cerebellin-2

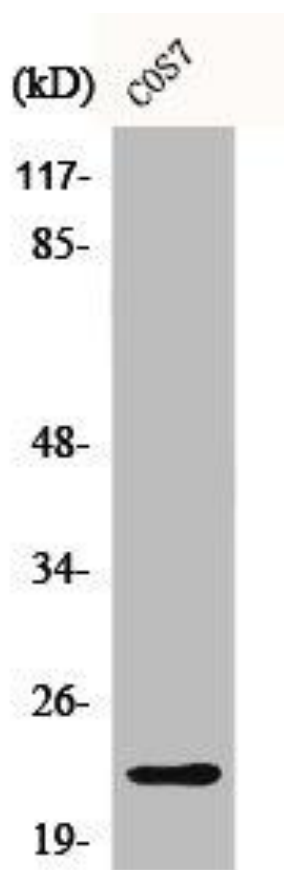
Immunogen:

Synthesized peptide derived from the C-terminal region of human Cerebellin 2.

Storage:

Liquid in PBS containing 50% glycerol, 0.5% BSA and 0.02% sodium azide.

Product Images



Western Blot analysis of COS7 cells using Cerebellin 2 Polyclonal Antibody.