

CBLN4 Antibody



PACO00588

Product Information

Size:

50ug

Reactivity:

Human, Mouse, Monkey

Source:

Rabbit

Isotype:

IgG

Applications:

ELISA, WB, IHC

Recommended dilutions:

WB:1:500-1:2000, IHC:1:100-1:300

Protein Background:

Gene ID:

CBLN4

Uniprot

Q9NTU7

Synonyms:

CBLN4; CBLNL1; Cerebellin-4; Cerebellin-like glycoprotein 1

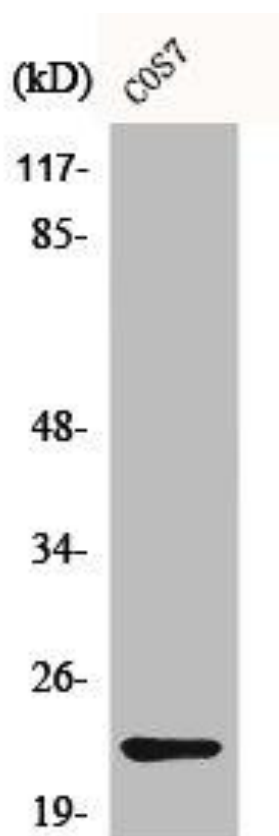
Immunogen:

Synthesized peptide derived from the C-terminal region of human Cerebellin 4.

Storage:

Liquid in PBS containing 50% glycerol, 0.5% BSA and 0.02% sodium azide.

Product Images



Western Blot analysis of COS7 cells using Cerebellin 4 Polyclonal Antibody.