

CLIP4 Antibody



PACO00612

Product Information

Size:

50ug

Reactivity:

Human

Source:

Rabbit

Isotype:

IgG

Applications:

ELISA, WB

Recommended dilutions:

WB:1:500-1:2000

Protein Background:

Gene ID:

CLIP4

Uniprot

Q8N3C7

Synonyms:

CLIP4; RSNL2; CAP-Gly domain-containing linker protein 4; Restin-like protein 2

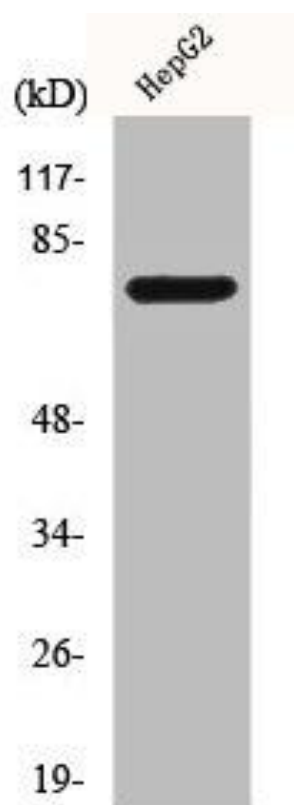
Immunogen:

Synthesized peptide derived from the Internal region of human CLIP4.

Storage:

Liquid in PBS containing 50% glycerol, 0.5% BSA and 0.02% sodium azide.

Product Images



Western Blot analysis of Jurkat cells using CLIP4 Polyclonal Antibody.