

CLK4 Antibody



PACO00613

Product Information

Size:

50ug

Reactivity:

Human, Mouse

Source:

Rabbit

Isotype:

IgG

Applications:

ELISA, WB, IHC

Recommended dilutions:

WB:1:500-1:2000, IHC:1:100-1:300

Protein Background:

Gene ID:

CLK4

Uniprot

Q9HAZ1

Synonyms:

CLK4; Dual specificity protein kinase CLK4; CDC-like kinase 4

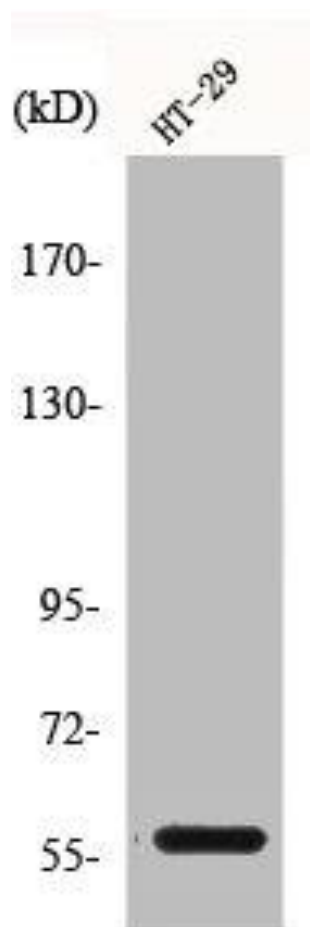
Immunogen:

Synthesized peptide derived from the Internal region of human CLK4.

Storage:

Liquid in PBS containing 50% glycerol, 0.5% BSA and 0.02% sodium azide.

Product Images



Western Blot analysis of HT29 cells using CLK4 Polyclonal Antibody.