

CFL1/CFL2 Antibody



PACO00619

Product Information

Size:

50ug

Reactivity:

Human, Mouse, Rat

Source:

Rabbit

Isotype:

IgG

Applications:

ELISA, WB, IF

Recommended dilutions:

WB:1:500-1:2000, IF:1:200-1:1000

Protein Background:

Gene ID:

CFL1/CFL2

Uniprot

P23528/Q9Y281

Synonyms:

CFL1; CFL; Cofilin-1; 18 kDa phosphoprotein; p18; Cofilin; non-muscle isoform; CFL2; Cofilin-2; Cofilin, muscle isoform

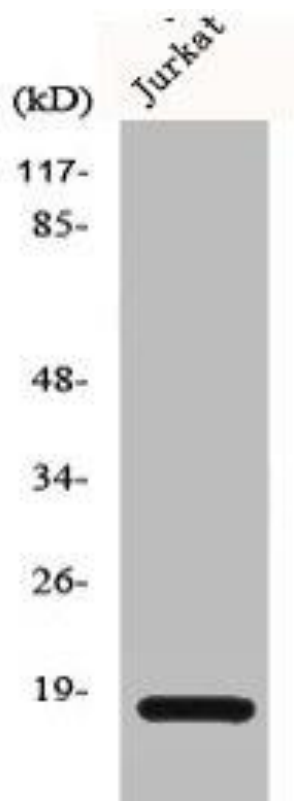
Immunogen:

Synthesized peptide derived from the Internal region of human Cofilin.

Storage:

Liquid in PBS containing 50% glycerol, 0.5% BSA and 0.02% sodium azide.

Product Images



Western Blot analysis of HeLa cells using Cofilin Polyclonal Antibody.