

GJB2 Antibody



PACO00626

Product Information

Size:

50ug

Reactivity:

Human, Mouse, Rat

Source:

Rabbit

Isotype:

IgG

Applications:

ELISA, WB

Recommended dilutions:

WB:1:500-1:2000

Protein Background:**Gene ID:**

GJB2

Uniprot

P29033

Synonyms:

GJB2; Gap junction beta-2 protein; Connexin-26; Cx26

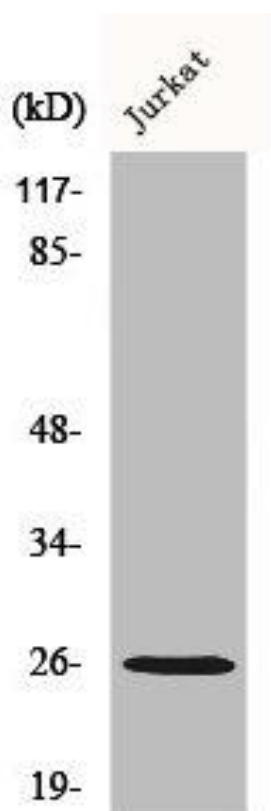
Immunogen:

Synthesized peptide derived from the Internal region of human Connexin-26.

Storage:

Liquid in PBS containing 50% glycerol, 0.5% BSA and 0.02% sodium azide.

Product Images



Western Blot analysis of Jurkat cells using Connexin-26 Polyclonal Antibody.