

# ATF4 Antibody



PACO00637

---

## Product Information

**Size:**

50ug

**Reactivity:**

Human

**Source:**

Rabbit

**Isotype:**

IgG

**Applications:**

ELISA, WB, IHC

**Recommended dilutions:**

IHC:1:100-1:300

**Protein Background:**

**Gene ID:**

ATF4

**Uniprot**

P18848

**Synonyms:**

ATF4; CREB2; TXREB; Cyclic AMP-dependent transcription factor ATF-4; cAMP-dependent transcription factor ATF-4; Activating transcription factor 4; Cyclic AMP-responsive element-binding protein 2; CREB-2; cAMP-responsive element-binding prot

**Immunogen:**

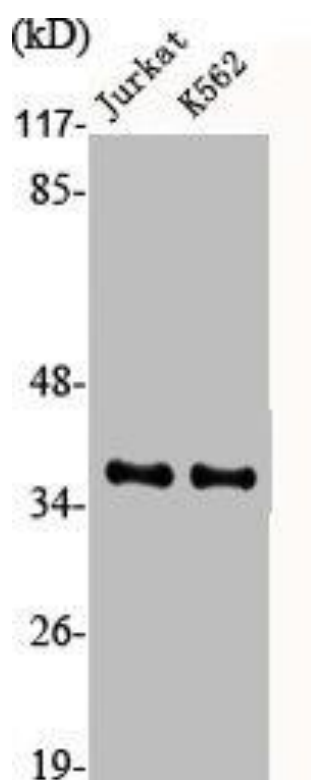
Synthesized peptide derived from human CREB-2 around the non-phosphorylation site of S245.

**Storage:**

Liquid in PBS containing 50% glycerol, 0.5% BSA and 0.02% sodium azide.

## Product Images

---



Western Blot analysis of Jurkat K562 cells using CREB-2 Polyclonal Antibody.