

CYP27A1 Antibody



PACO00662

Product Information

Size:

50ug

Reactivity:

Human

Source:

Rabbit

Isotype:

IgG

Applications:

ELISA, WB, IHC, IF

Recommended dilutions:

WB:1:500-1:2000, IHC:1:100-1:300,
IF:1:200-1:1000

Protein Background:

Gene ID:

CYP27A1

Uniprot

Q02318

Synonyms:

CYP27A1; CYP27; Sterol 26-hydroxylase; mitochondrial; 5-beta-cholestane-3-alpha,7-alpha,12-alpha-triol 27-hydroxylase; Cytochrome P-450C27/25; Cytochrome P450 27; Sterol 27-hydroxylase; Vitamin D(3) 25-hydroxylase

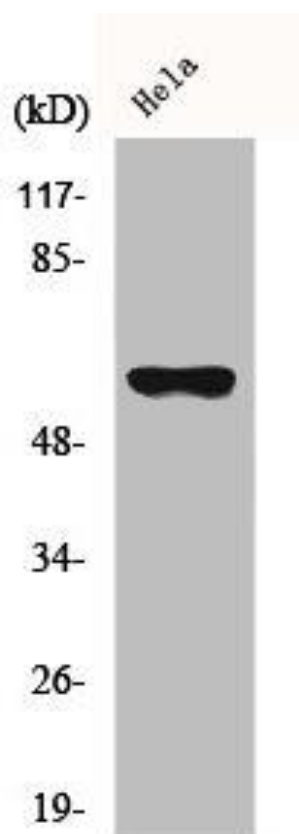
Immunogen:

Synthesized peptide derived from the Internal region of human CYP27A1.

Storage:

Liquid in PBS containing 50% glycerol, 0.5% BSA and 0.02% sodium azide.

Product Images



Western Blot analysis of HeLa cells using CYP27A1 Polyclonal Antibody.