

NBL1 Antibody



PACO00684

Product Information

Size:

50ug

Reactivity:

Human

Source:

Rabbit

Isotype:

IgG

Applications:

ELISA, WB, IHC, IF

Recommended dilutions:

WB:1:500-1:2000, IHC:1:100-1:300,
IF:1:200-1:1000

Protein Background:

Gene ID:

NBL1

Uniprot

P41271

Synonyms:

NBL1; DAN; DAND1; Neuroblastoma suppressor of tumorigenicity 1; DAN domain family member 1; Protein N03; Zinc finger protein DAN

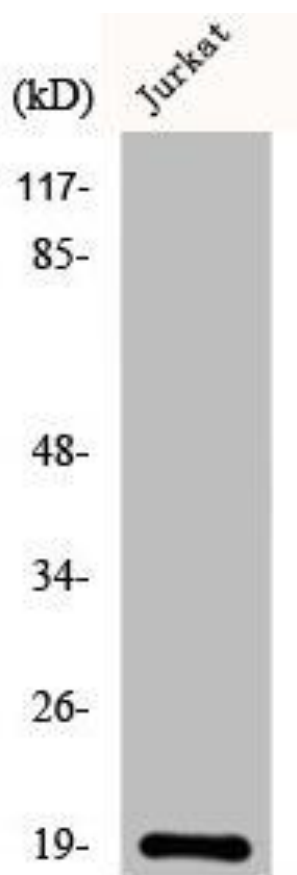
Immunogen:

Synthesized peptide derived from the C-terminal region of human DAN.

Storage:

Liquid in PBS containing 50% glycerol, 0.5% BSA and 0.02% sodium azide.

Product Images



Western Blot analysis of COLO205 cells using DAN Polyclonal Antibody.