

DOK6 Antibody



PACO00721

Product Information

Size:

50ug

Reactivity:

Human, Mouse

Source:

Rabbit

Isotype:

IgG

Applications:

ELISA, WB, IHC, IF

Recommended dilutions:

WB:1:500-1:2000, IHC:1:100-1:300,
IF:1:200-1:1000

Protein Background:**Gene ID:**

DOK6

Uniprot

Q6PKX4

Synonyms:

DOK6; DOK5L; Docking protein 6; Downstream of tyrosine kinase 6

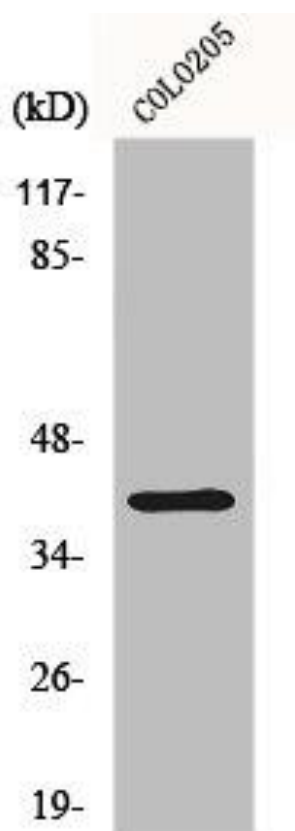
Immunogen:

Synthesized peptide derived from the Internal region of human Dok-6.

Storage:

Liquid in PBS containing 50% glycerol, 0.5% BSA and 0.02% sodium azide.

Product Images



Western Blot analysis of COLO205 cells using Dok-6 Polyclonal Antibody.