

# E2F2 Antibody



PACO00731

---

## Product Information

**Size:**

50ug

**Reactivity:**

Human, Mouse

**Source:**

Rabbit

**Isotype:**

IgG

**Applications:**

ELISA, WB, IHC

**Recommended dilutions:**

WB:1:500-1:2000, IHC:1:100-1:300

**Protein Background:**

**Gene ID:**

E2F2

**Uniprot**

Q14209

**Synonyms:**

E2F2; Transcription factor E2F2; E2F-2

**Immunogen:**

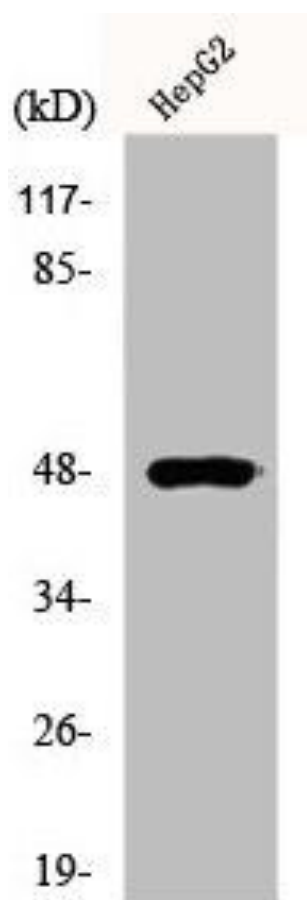
Synthesized peptide derived from the Internal region of human E2F-2.

**Storage:**

Liquid in PBS containing 50% glycerol, 0.5% BSA and 0.02% sodium azide.

## Product Images

---



Western Blot analysis of COLO205 cells using E2F-2 Polyclonal Antibody.