

# MEGF8 Antibody



PACO00740

---

## Product Information

**Size:**

50ug

**Reactivity:**

Human

**Source:**

Rabbit

**Isotype:**

IgG

**Applications:**

ELISA, WB, IHC

**Recommended dilutions:**

WB:1:500-1:2000, IHC:1:100-1:300

**Protein Background:**

**Gene ID:**

MEGF8

**Uniprot**

Q7Z7M0

**Synonyms:**

MEGF8; C19orf49; EGFL4; KIAA0817; Multiple epidermal growth factor-like domains protein 8; Multiple EGF-like domains protein 8; Epidermal growth factor-like protein 4; EGF-like protein 4

**Immunogen:**

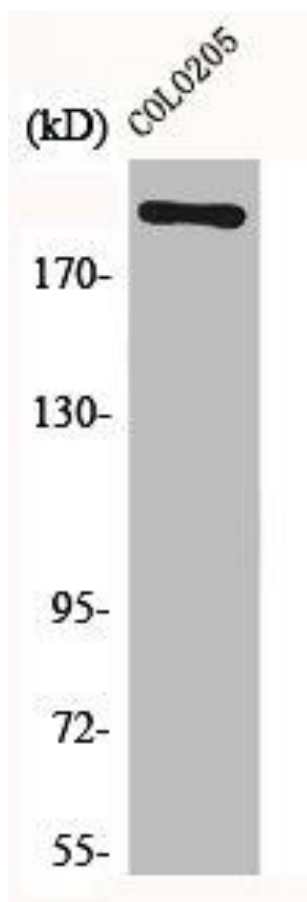
Synthesized peptide derived from the Internal region of human EGFL4.

**Storage:**

Liquid in PBS containing 50% glycerol, 0.5% BSA and 0.02% sodium azide.

## Product Images

---



Western Blot analysis of COLO205 cells using EGFL4 Polyclonal Antibody.