

EPS8L1 Antibody



PACO00771

Product Information

Size:

50ug

Reactivity:

Human, Mouse

Source:

Rabbit

Isotype:

IgG

Applications:

ELISA, WB, IHC, IF

Recommended dilutions:

WB:1:500-1:2000, IHC:1:100-1:300,
IF:1:200-1:1000

Protein Background:

Gene ID:

EPS8L1

Uniprot

Q8TE68

Synonyms:

EPS8L1; DRC3; EPS8R1; PP10566; Epidermal growth factor receptor kinase substrate 8-like protein 1; EPS8-like protein 1; Epidermal growth factor receptor pathway substrate 8-related protein 1; EPS8-related protein 1

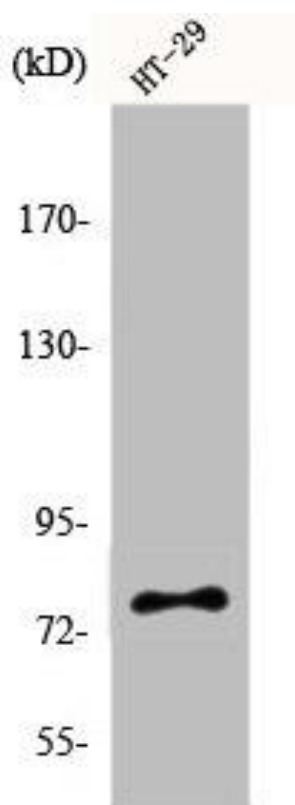
Immunogen:

Synthesized peptide derived from the Internal region of human Eps8L1.

Storage:

Liquid in PBS containing 50% glycerol, 0.5% BSA and 0.02% sodium azide.

Product Images



Western Blot analysis of HT29 cells using Eps8L1 Polyclonal Antibody.