

EDNRA Antibody



PACO00781

Product Information

Size:

50ug

Reactivity:

Human, Mouse, Monkey

Source:

Rabbit

Isotype:

IgG

Applications:

ELISA, WB, IHC, IF

Recommended dilutions:

WB:1:500-1:2000, IHC:1:100-1:300,
IF:1:200-1:1000

Protein Background:**Gene ID:**

EDNRA

Uniprot

P25101

Synonyms:

EDNRA; ETA; ETRA; Endothelin-1 receptor; Endothelin A receptor; ET-A; ETA-R; hET-AR

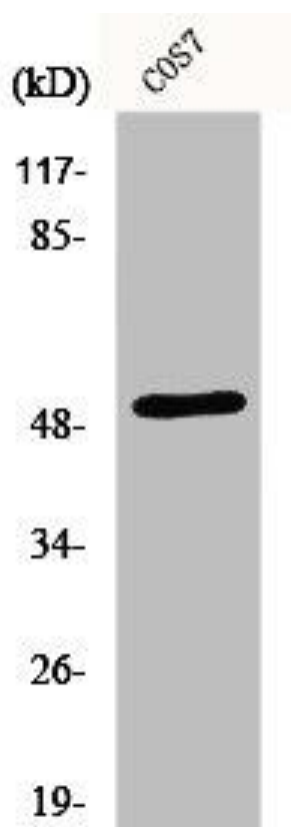
Immunogen:

Synthesized peptide derived from the C-terminal region of human ETAR.

Storage:

Liquid in PBS containing 50% glycerol, 0.5% BSA and 0.02% sodium azide.

Product Images



Western Blot analysis of COS7 cells using ETAR Polyclonal Antibody.