

# RIMKLA Antibody



PACO00788

---

## Product Information

**Size:**

50ug

**Reactivity:**

Human, Mouse, Monkey

**Source:**

Rabbit

**Isotype:**

IgG

**Applications:**

ELISA, WB

**Recommended dilutions:**

WB:1:500-1:2000

**Protein Background:**

**Gene ID:**

RIMKLA

**Uniprot**

Q8IXN7

**Synonyms:**

RIMKLA; FAM80A; N-acetylaspartyl-glutamate synthetase A; NAAG synthetase A; NAAGS; Ribosomal protein S6 modification-like protein A

**Immunogen:**

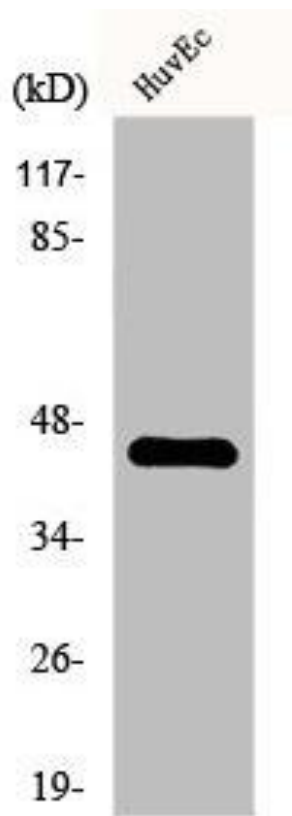
Synthesized peptide derived from the Internal region of human FAM80A.

**Storage:**

Liquid in PBS containing 50% glycerol, 0.5% BSA and 0.02% sodium azide.

## Product Images

---



Western Blot analysis of Jurkat cells using FAM80A Polyclonal Antibody.